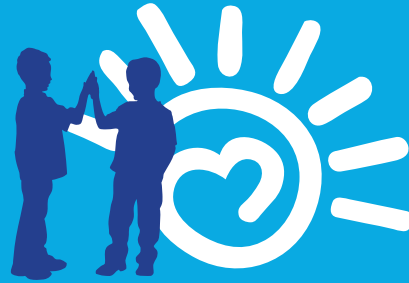


Westside Regional Center Services

Once a person becomes eligible, Westside Regional Center hopes to work as a true partner with you. Some of the services we provide include:

- ✓ Diagnostic evaluation and referrals
- ✓ Lifelong individualized planning and service coordination
- ✓ Assistance in finding resources in the community
- ✓ Behavioral evaluation, as needed
- ✓ Individual, family and community education and training
- ✓ Advocacy for the protection of legal, civil and service rights
- ✓ Educational advocacy
- ✓ Life transition planning
- ✓ Respite
- ✓ Planning and exploring supported living options including both residential and in-home support
- ✓ Assistance with independent living and employment for adults

To see a list of available services,
please visit our website
www.westsiderc.org



Westside Family Resource and Empowerment Center

LA County Inclusion Partnership

Established in 1993, The Westside Family Resource & Empowerment Center (WFREC) is open to the entire Los Angeles community and staffed by experienced parents and family members of individuals with special needs.

We are trained to provide informational and emotional support to families who have a child or young adult with a disability, chronic illness, or any other special health care needs. WFREC also maintains a multimedia lending library and provides ongoing workshops, trainings, and support groups for families and other community members.

5901 Green Valley Circle, Suite 318
Culver City, CA 90230

www.wfrec.org

Call 310-258-4063

Hours:
9:00 am—5:00 pm
or by appointment



INTAKE

3 YEARS OF AGE AND OLDER

Providing Assessment and Support
for Individuals with Developmental
Disabilities and their Families



WESTSIDE
REGIONAL CENTER

Who We Are

Westside Regional Center (WRC) is one of 21 private, non-profit centers in California, funded by the State Department of Developmental Services to provide or coordinate services for individuals with, or at risk for, developmental disabilities and their families.

Who We Serve

Westside Regional Center serves infants at risk for developmental disabilities, individuals with developmental disabilities, and their families who reside in these communities:

Bel Air	Inglewood	Playa Del Rey
Beverly Hills	Lawndale	Santa Monica
Century City	Los Angeles	Venice
Culver City	Malibu	Westwood
El Segundo	Mar Vista	
Gardena	Marina Del Rey	
Hawthorne	Pacific Palisades	

The term developmental disability describes a group of conditions that include intellectual disability, epilepsy, cerebral palsy, autism, and closely related conditions that require treatment similar to that provided to persons with intellectual disability. A developmental disability must have occurred prior to age 18, and the condition must be substantially impactful and lifelong in nature.

Westside Regional Center
5901 Green Valley Circle, Suite 320
Culver City, CA 90230

www.westsiderc.org

Call 310 258 4121
Fax 310 338 9597
intakecoverage3@westsiderc.org

What is Intake?

Intake is a process to determine if an individual has a condition that meets the criteria for regional center eligibility. WRC eligibility team reviews social, medical, psychological and educational information to get a clear picture of the person. A diagnosis and an impact in overall functioning that is reasonably attributed to the eligible condition are required for eligibility. This information may come from outside sources and/or from interviews and testing. Below is an overview of the process:

Step 1: Family member contacts WRC to speak to an intake coordinator and request an application to receive Regional Center Services.

Step 2: The family completes and submits the application along with any records including school IEPs and/or assessments, private evaluations and any pertinent medical records.

Step 3: After WRC receives the completed application and records, you will be notified if more information is needed or contacted to schedule an intake meeting. This includes an interview with an intake counselor as well as psychological assessments.

Step 4: WRC will schedule and complete any necessary assessments at no cost to the family. At minimum this will include a meeting with an intake counselor and a psychological assessment.

Step 5: An eligibility team will review your records and assessments. Once a decision is made, an intake coordinator will contact you to inform you of your child's eligibility status and team recommendations. If not eligible, the intake team will make recommendations and try to provide you with appropriate resources in the community. If you disagree with the eligibility decision, you always have the right to appeal the decision.

Developmental Disabilities: A Closer Look

Intellectual Disability is a term used when a person has certain limitations in mental functioning and adaptive skills. These limitations will cause a child to learn and develop more slowly than typically expected. For example, it may take them longer to learn to speak, walk, or take care of their personal needs such as dressing or eating.

Cerebral Palsy (also known as CP) is a disorder that affects muscle coordination and body movement. CP can be caused either when the brain does not develop properly during pregnancy or if there is damage to the brain before, during, or after birth. Someone with mild CP might have a slight limp while someone with a severe case of CP may require a wheelchair. Poor coordination, stiffness, weak muscles, and tremors are often present.

Epilepsy is a disorder that is characterized by recurrent seizures. Seizures may involve loss of consciousness, uncontrolled body movements, and loss of memory. However, having a seizure does not necessarily mean that a person has epilepsy. A neurologist needs to be consulted for diagnosis and treatment of epilepsy.

Autism Spectrum Disorder (also known as ASD) is a disorder that affects a child's ability to communicate, play, and relate to others. A diagnosis of ASD is made when an individual displays 6 or more symptoms across three major areas: (a) social interaction, (b) communication, and (c) restricted and repetitive behaviors.

