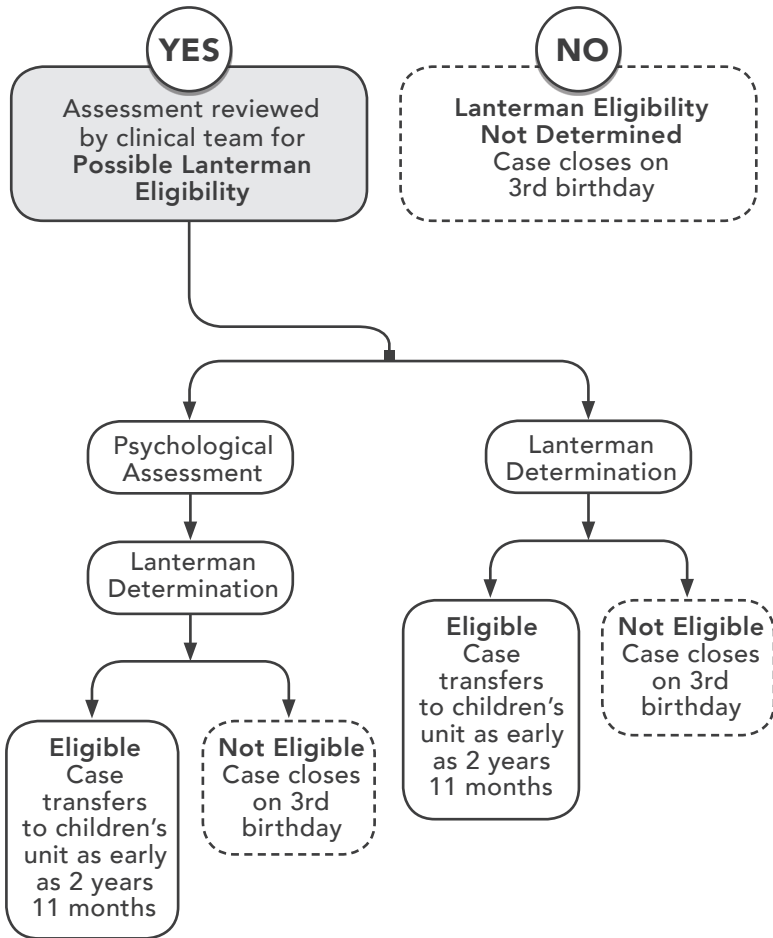
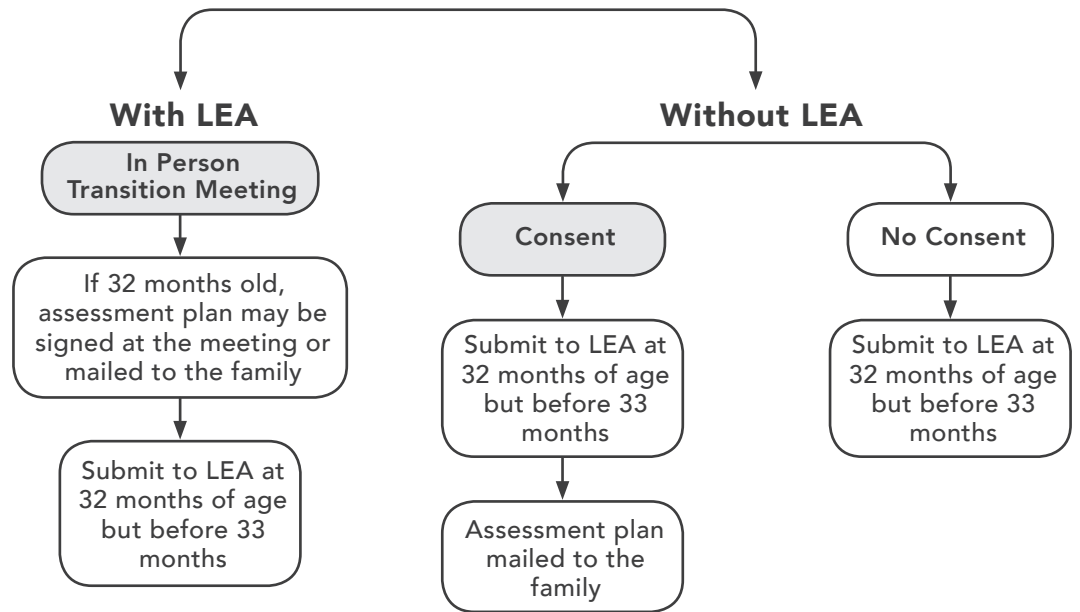


30 Month IFSP/Transition Conference Eligibility Determination

Westside Regional Center Developmental Assessment



Local School District IFSP/Transition Conference



Terms

IFSP – Individualized Family Service Plan
Lanterman Developmental Services Act – Defines developmental disability as intellectual disability, cerebral palsy, epilepsy, autism, or a condition that requires treatment similar to that provided to persons with an intellectual disability
LEA – Local Education Agency
Consent – Document signed by parents/caregivers allowing release of information to the local school district



Please Keep Service Coordinator Updated

Service Coordinator _____ Contact Info _____

5901 Green Valley Circle, Suite 320 Culver City, CA 90230 / www.westsiderc.org / (310) 258-4000