

## Who We Are

Westside Regional Center (WRC) is one of 21 private, non-profit centers in California, funded by the State Department of Developmental Services to provide or coordinate services for individuals with or at risk for developmental disabilities and their families.

## Who We Serve

Westside Regional Center serves infants at risk for developmental disabilities, individuals with developmental disabilities, and their families who reside in these communities:

Bel Air	Inglewood	Playa Del Rey
Beverly Hills	Lawndale	Santa Monica
Century City	Los Angeles	Venice
Culver City	Malibu	Westwood
El Segundo	Mar Vista	
Gardena	Marina Del Rey	
Hawthorne	Pacific Palisades	

The term developmental disability describes a group of conditions that include intellectual disability, epilepsy, cerebral palsy, autism, and closely related conditions that require treatment similar to that provided to persons with intellectual disability. A developmental disability must have occurred prior to age 18, and the condition must be substantially impacting and lifelong in nature.

Westside Regional Center  
5901 Green Valley Circle, Suite 320  
Culver City, CA 90230

[www.westsiderc.org](http://www.westsiderc.org)

Call 310 258 4096

Fax 310 258 4059

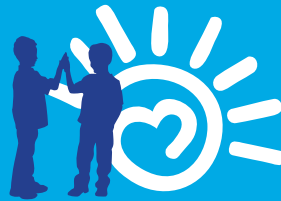
[intakeunderage3@westsiderc.org](mailto:intakeunderage3@westsiderc.org)



## Here Are Tips & Activities To Help Your Child Grow

- Play Peek-a-Boo
- Sing a "clean up" song
- Help me identify my emotions
- Read a book and ask me questions

**These are just a few examples.  
The sky is the limit.  
Let your imagination fly!**



*Westside Family Resource  
and Empowerment Center*  
LA County Inclusion Partnership

For parent to parent support and resources,  
please call Westside Family Resource and  
Empowerment Center.

5901 Green Valley Circle, Suite 318  
Culver City, CA 90230  
[www.wfrec.org](http://www.wfrec.org)  
Tel: 310-258-4063



# EARLY INTERVENTION INTAKE

## BIRTH TO 3 YEARS

Providing Assessment and Support for  
Infants, Toddlers and their Families



**WESTSIDE**  
REGIONAL CENTER

## What are Developmental Delays?

As children grow, they learn certain skills such as smiling, communicating, eating solid foods, turning over, crawling, or standing. We expect these skills to develop naturally over time and have a general sense of when these abilities emerge.

The schedule for these emerging skills throughout a child's development is called developmental milestones. Since children do not learn and develop skills at the same pace, normal development is broadly described. For example, children who are born on the same day may learn and acquire the same skill months apart, and yet they both can be considered "on schedule." Parents and caregivers may become concerned about possible developmental delays, when their child's developmental skills do not emerge as anticipated on this broad schedule.

As a parent or caregiver, you may be reading this brochure because you have concerns about your child's developmental progress. Westside Regional Center hopes to be a true partner with your family to help answer questions you might have and offer support as your child goes through the developmental evaluation process.



## What is Early Intervention?

Our Early Intervention Program provides developmental monitoring, coordination, and services to children (from birth to 3 years of age). A baby or young child may be considered eligible if one or more of the following is present:

- ✓ **Developmental delay in one of the following five areas:** Adaptive, Cognitive, Communication, Social/Emotional, Physical
- ✓ **Conditions that are known to potentially result in developmental delay or disability.**

This program is designed to ensure that eligible infants, toddlers and their families receive support early enough to enhance the child's development and lessen the need for special services later in his/her life.

## Early Intervention Services

Our Early Intervention Program emphasizes the development of language, personal, social, cognitive and motor skills under the guidance of specialists in child development.

## Early Intervention Services and Supports May Include:

- ✓ Diagnostic evaluation and referrals
- ✓ Development of an Individualized Family Service Plan (IFSP)
- ✓ Service Coordination
- ✓ Specialized infant/toddler center-based programs
- ✓ Family training, counseling, home visits
- ✓ Referral for or provision of therapy (e.g. occupational, physical or speech)\*
- ✓ Behavioral therapy\*

\*If your child qualifies for therapies and these services are not covered by your insurance or other community resources.

## How Can I Apply?

Westside Regional Center (WRC) will initiate an intake process to determine if your child meets eligibility conditions for the Early Intervention Program. WRC looks into child's developmental, social, and medical history. This information may come from outside sources or from in-home interviews, examinations and testing. There is no cost to you for any of the tests or other services that we provide during Intake. Below is a step-by-step overview of this process.

### Step 1

Family members, physicians, schools, and/or hospitals contact the Intake Department at WRC to refer a baby or young child.

### Step 2

You will complete the intake application with any records, including private evaluations and other pertinent medical records. You will be asked to complete and sign parent consent forms, which are essential to complete the process.

### Step 3

You will be contacted to schedule evaluations that may take place at the home, school, and/or WRC. These include (1) family intake evaluation by an Intake Counselor, (2) developmental evaluation, and (3) other evaluations as needed (e.g. speech/language, medical, etc.).

### Step 4

An eligibility team will meet to review your child's records and evaluations. You are invited to be present at this meeting. Once a decision has been made, you will receive a letter informing you of your child's eligibility status. If not eligible, the intake team will provide you with appropriate community resources. If you disagree with the eligibility decision, you have the right to appeal the decision.